

fridge-e 47/35/31-30 (Box 5)

Outer Dimensions are:

L=47cm

W=35cm

H=31cm

Insulation Thickness is 30mm

Inner Working Dimensions are:

L=37cm

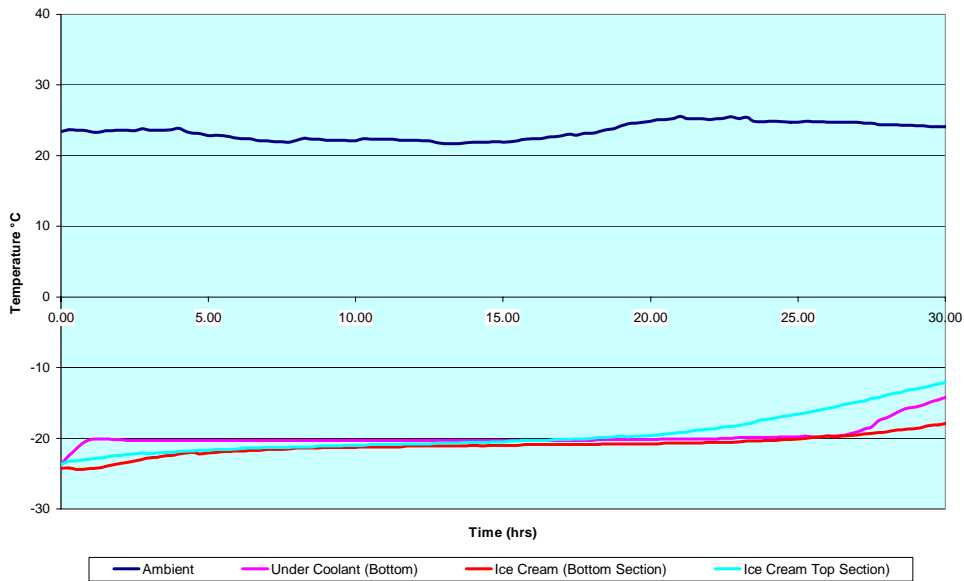
W=25cm

H=21cm

This fridge-e system can function as a frozen or chilled system.

fridge-e Frozen and Chilled (Both graphs have 30mm insulation)

Fridge e Frozen - 47/35/31-30-8



Fridge e Chilled - 47/35/31-30-8

