

**fridge-e 38/32/27-20 (Box 3)**

Outer Dimensions are:

L=38cm

W=32cm

H=27cm

Insulation Thickness is 20mm

Inner Working Dimensions are:

L=30cm

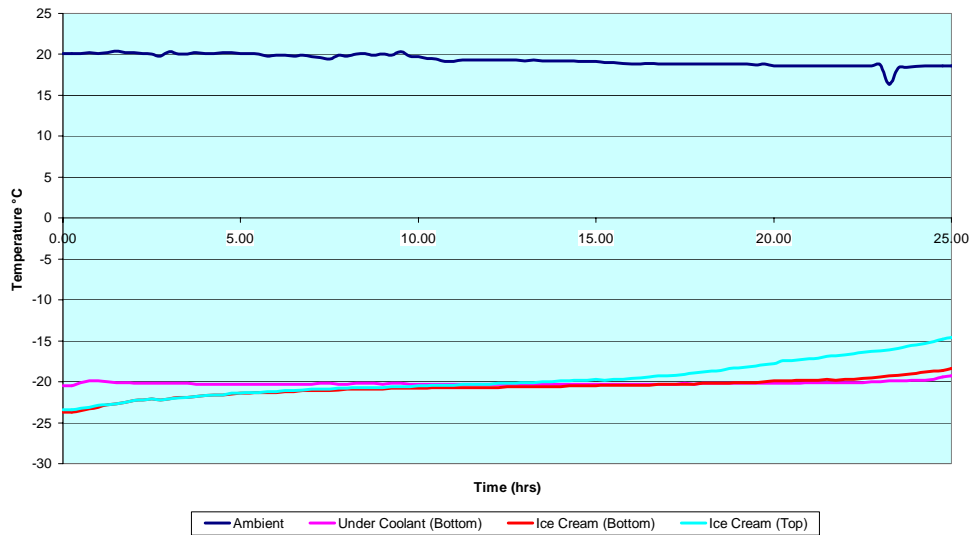
W=24cm

H=19cm

This fridge-e system can function as a frozen or chilled system.

**fridge-e Frozen and Chilled (Both graphs have 20mm insulation)**

**Fridge e Frozen Box 38/32/27-20-6**



**Fridge e Chilled Box 38/32/27-20-6**

