

**fridge-e 34/24/24-7.5 (Box 2)**

Outer Dimensions are:

L=34cm

W=24cm

H=24cm

Insulation Thickness is 7.5mm

Inner Working Dimensions are:

L=28.5cm

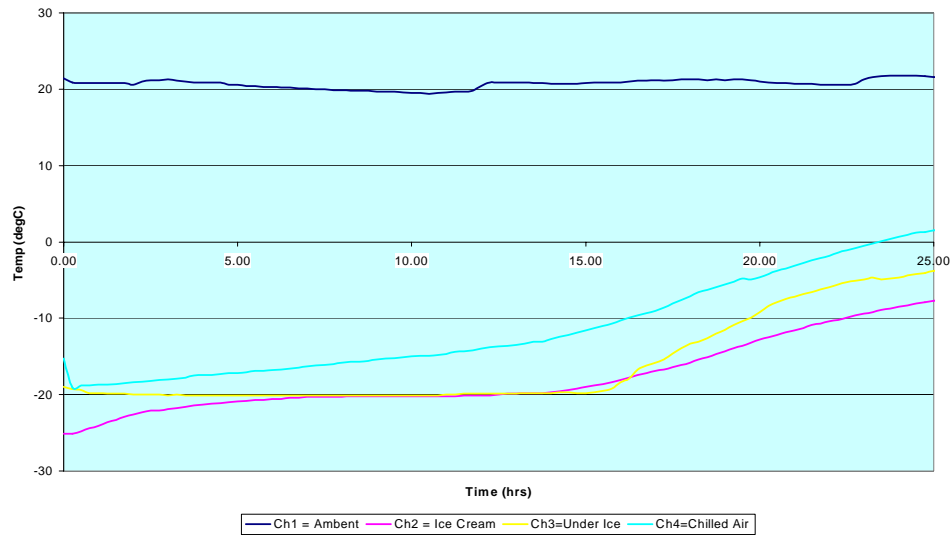
W=18.5cm

H=18.5cm

This fridge-e system can function as a frozen or chilled system.

**fridge-e Frozen and Chilled (Graph 1 - with 20mm. Graph 2 with 7.5mm Insulation)**

**Fridge-e Frozen Box 34/24/24-6-4**



**Fridge e Chilled Box 34/24/24-6-2**

