



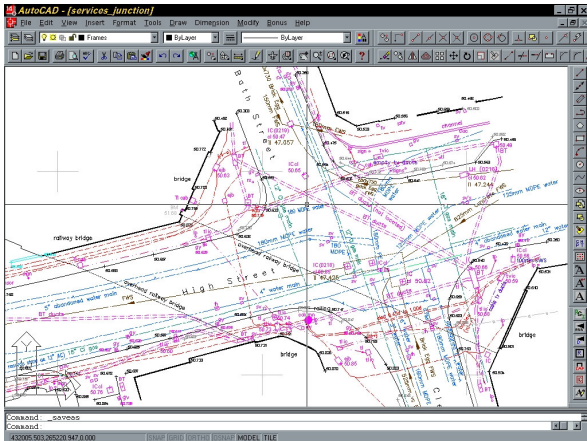
GPS surveys are ideal for large open areas



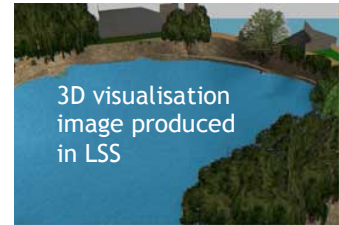
RGI Survey vehicles allow full range of equipment and safety gear to be carried

The Old Stables 70a Oxford Street Rugby Warwickshire CV21 3NE
 tel: 01788 546093 fax: 01788 553599 mail@rgisurveys.com
www.rgisurveys.com

Company Profile RGI Surveys have been trading since 1989 and in that time have established a reputation for comprehensive, accurate surveys and quality service. We undertake land surveys, underground services surveys and related contracts for Clients such as: Severn Trent, Anglo Holt, Tarmac, Costain, Rugby Borough Council, Warwick District and Borough Council, plus other public sector authorities and trusts. RGI surveyors multitask to meet all Clients needs on site. Staff experienced in topographic and full utility surveys, & are confined spaces trained for safe working.



Land Surveys Electronic detail surveys using very latest fully automated and reflectorless total stations. Downloaded directly to PC and processed to Client's presentation specification in 2D or 3D digital format. Post processing utilising AutoCAD and LSS software, enabling digital modelling to produce contouring, sections, elevations, volume calculations and 3D visualisation and self loading fly-by animations. Reflecterless lasers ensures measurements to inaccessible points and aids surveying in sensitive areas.



3D visualisation image produced in LSS

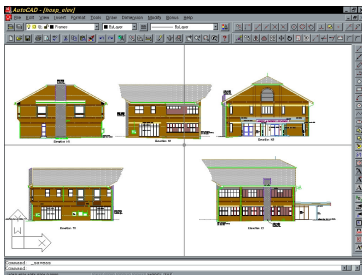
RGI Surveys have the latest **GPS** technology enabling quick and precise surveying in large open areas. Surveys can be coordinated to Ordnance Survey level and grid, even in remote areas. Several survey sites kilometres apart can be linked, for example coordination of photo montage points, can be surveyed quickly, effectively and efficiently. Single services located across open fields can be coordinated to Ordnance datum in three dimensions by single surveyor.



Utility Surveys Extensive experience in location and mapping of underground services and drainage in all areas. One team can provide service clearance plus coordination of borehole and sample pits. **RGI SURVEYS** use **RADIODETECTION** electromagnetic equipment to locate single service routes or full services surveys.

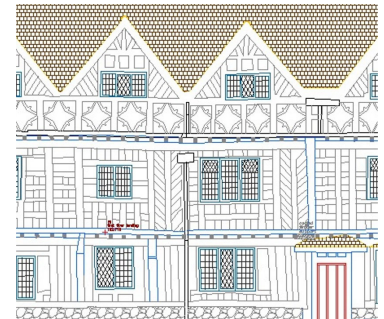


Ground Probing Radar is used to complement our surveys to locate non-metallic services. Service check surveys prior to excavation or borehole sampling, for cost effective and thorough underground service avoidance. Drawings and reports compiled for environmental drainage surveys.



Building Surveys Measured Floor plans, Elevations & Building Service Plans. Detailed to your requirements

CAD Drafting 2D and 3D drafting & design in industry standard software (AutoCAD and LSS)



mail@rgisurveys.com
www.rgisurveys.com