



## RETAIL DEVELOPMENTS

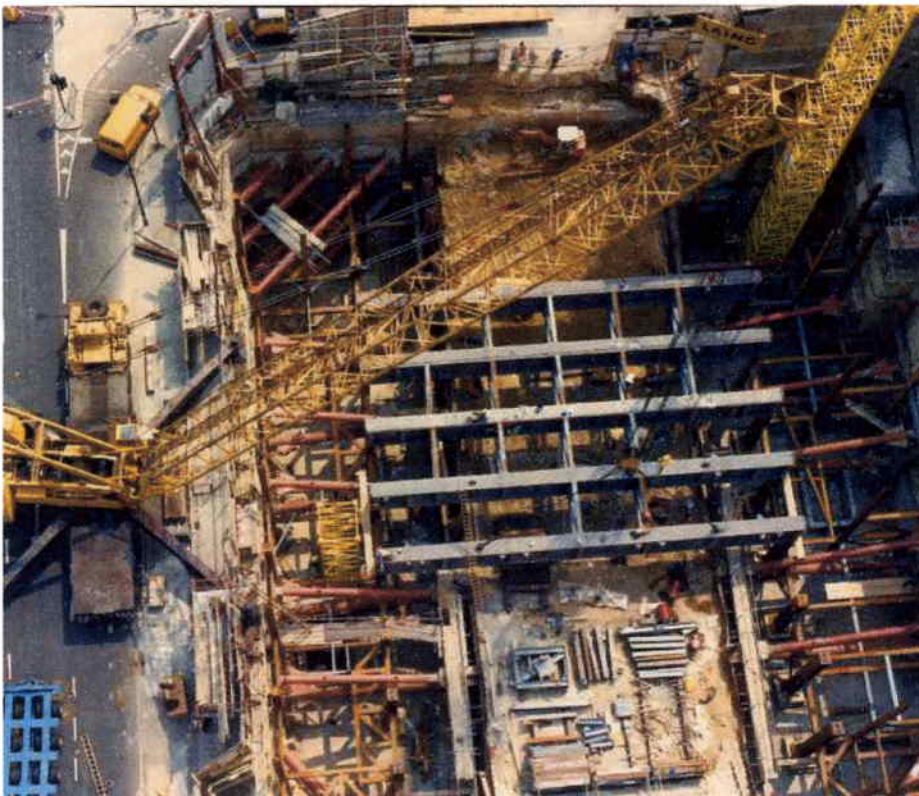
### TEXAS HOMECARE

- New retail superstore for Texas Homecare, Acton, London  
Construction of single storey retail unit, warehousing and car parking  
Construction cost £1.5M
- New retail superstores for Texas Homecare  
Fitting out of single storey developers shell units at:-  
Watford, Orpington, Battersea, Beckton, Reigate, Cheltenham and Hayes

1984 - 1986



LONDON  
METROPOLE  
HOTEL,  
EDGWARE ROAD  
LONDON



- Extension to Metropole Hotel, Edgware Road, London  
New construction to form 200 bedroom extension to existing Hotel including three level deep basement with multi purpose conference and exhibition hall, new hotel reception, bars, syndicate rooms and leisure centre with swimming pool suspended at second floor level.  
Construction cost £43.0M  
Traditional JCT 1980 Contract  
Activities from work stages to C to completion.

1987 - 1992

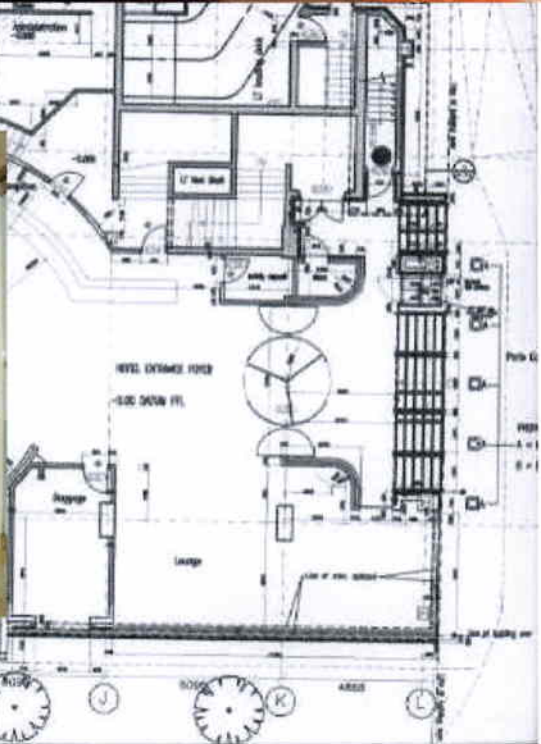
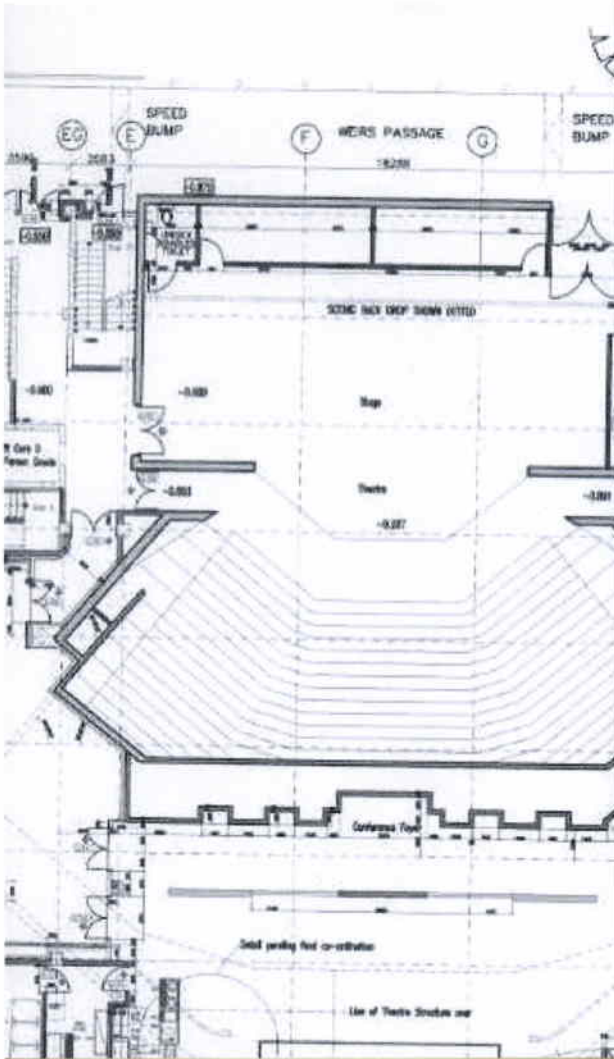


DE VERE GRAND HARBOUR HOTEL, WEST QUAY, SOUTHAMPTON



- Grand Harbour Hotel, Southampton, for De Vere Hotels and Leisure  
New Build Hotel with 200 bedrooms, restaurant, conference and syndicate facilities and leisure centre with swimming pool  
Construction cost, £18.0M  
Design and Build Contract (Contractor Client)  
Work stages D to completion (completed).

1991 - 1994

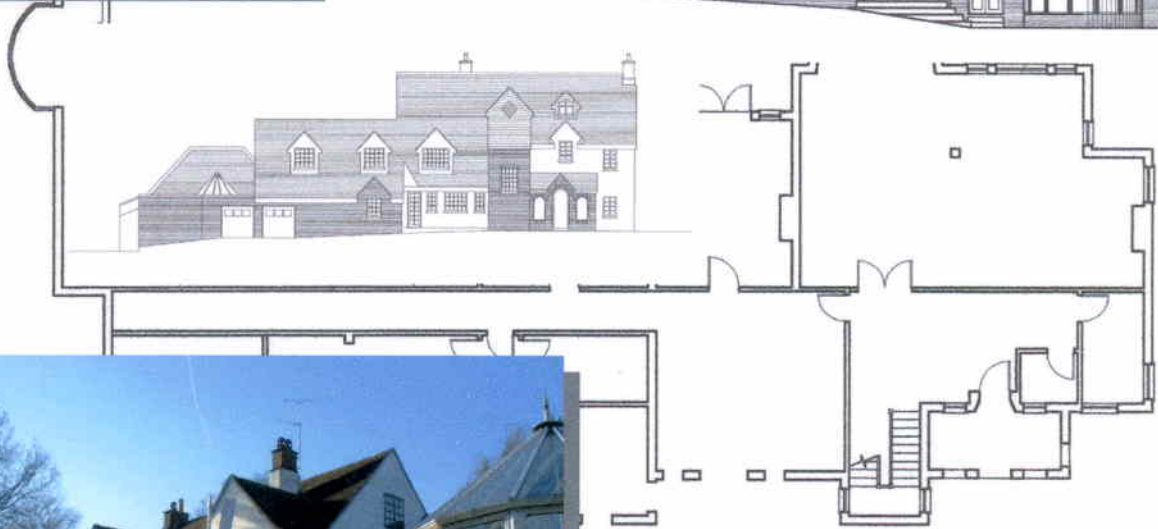
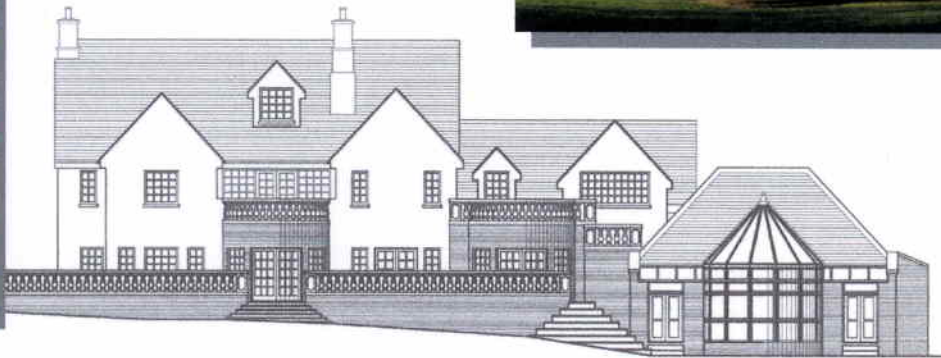
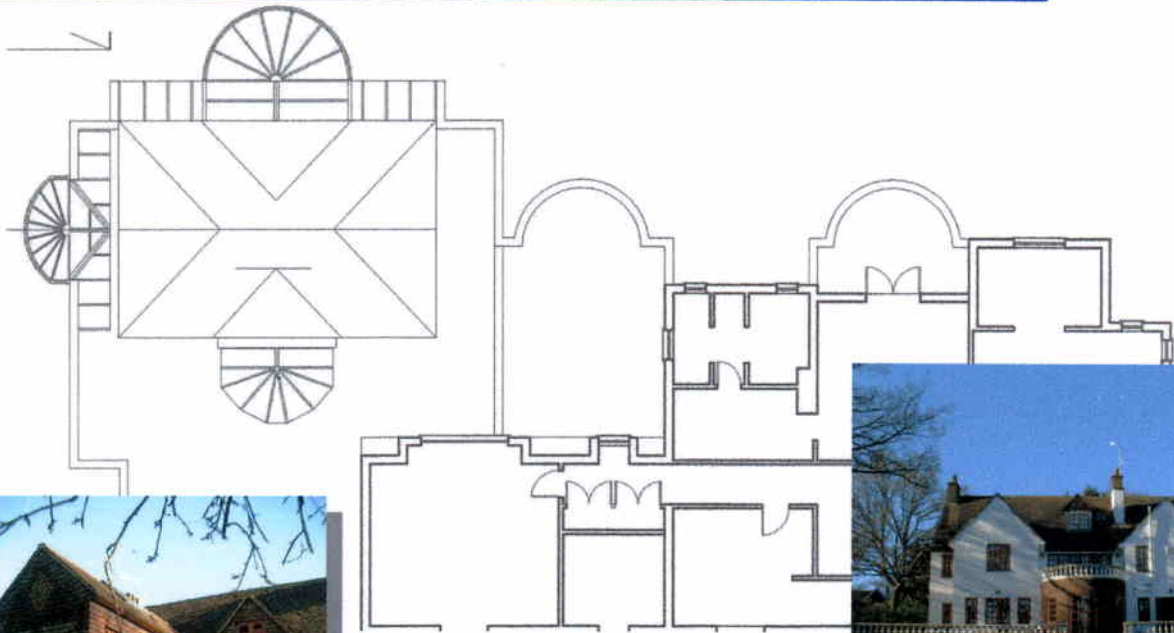


## SHAW PARK PLAZA HOTEL. EUSTON ROAD, LONDON

- Shaw Park Plaza Hotel, Euston Road, London, for Park Plaza Hotels  
 Conversion of existing fifteen-storey office building, former Camden Library and Shaw Theatre into 300 bedroom Hotel with restaurant, conference, syndicate rooms and leisure centre.  
 Construction cost, £21.0M  
 Construction Management Project  
 Activities through work stages A to L

1995 - 1999

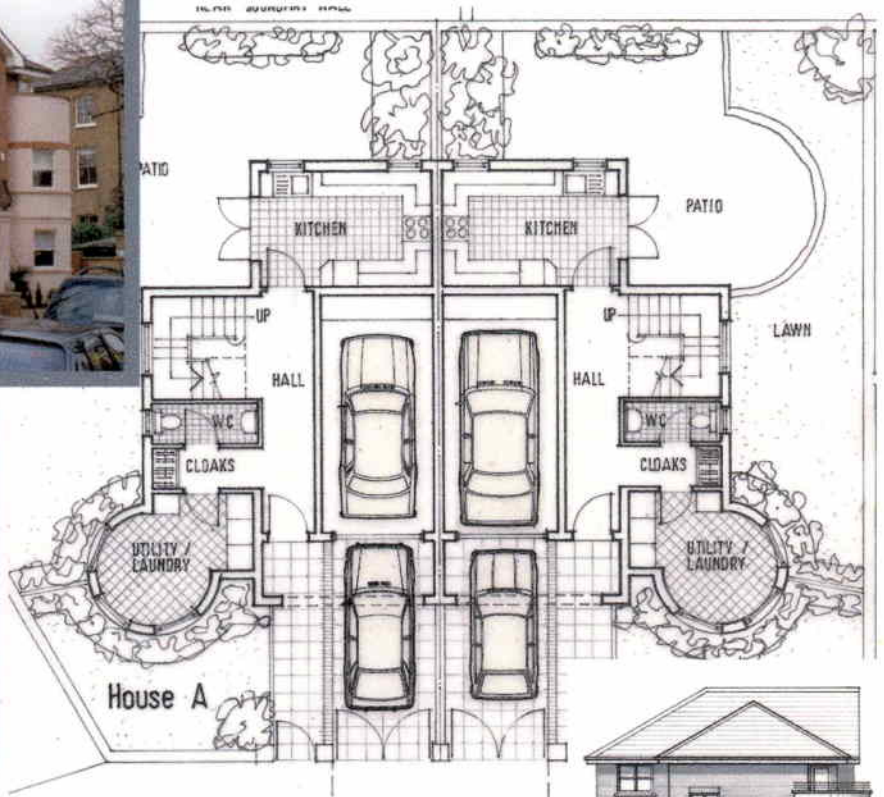
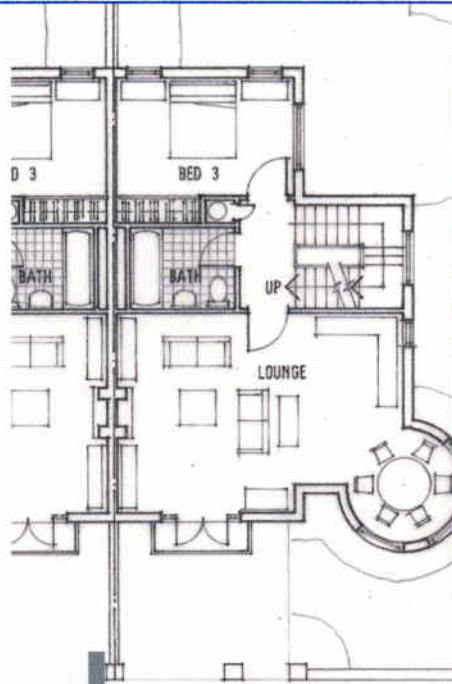
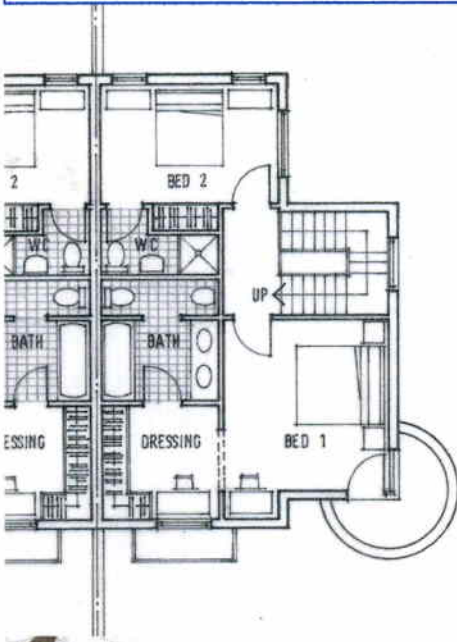
RESIDENTIAL DEVELOPMENTS



• "Wildoaks", Kingswood, Surrey

1996

# RESIDENTIAL DEVELOPMENTS



SIDE ELEVATION - HOUSE A

- Sheengate Gardens, Sheen, Richmond

1995

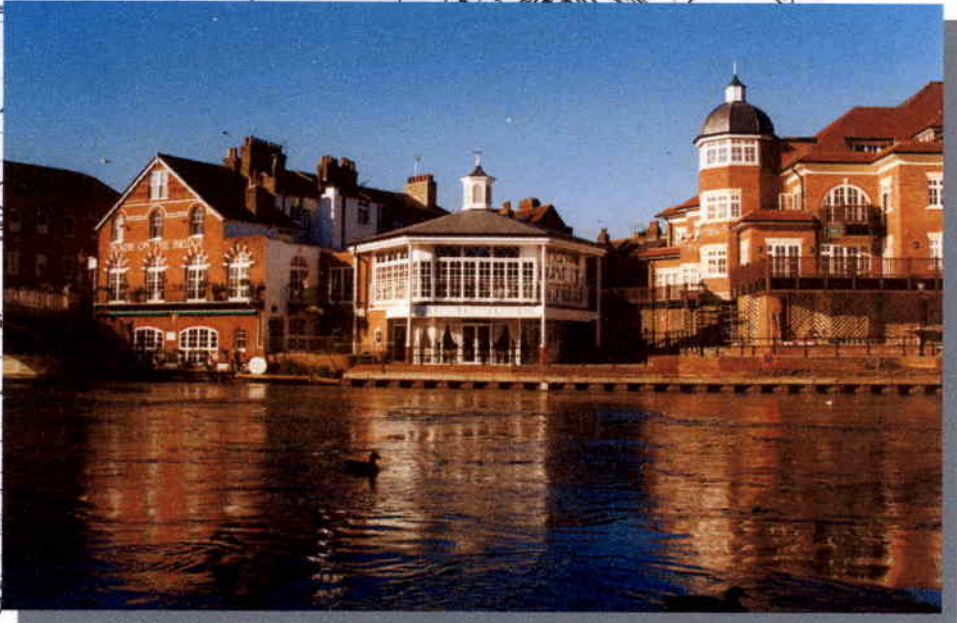
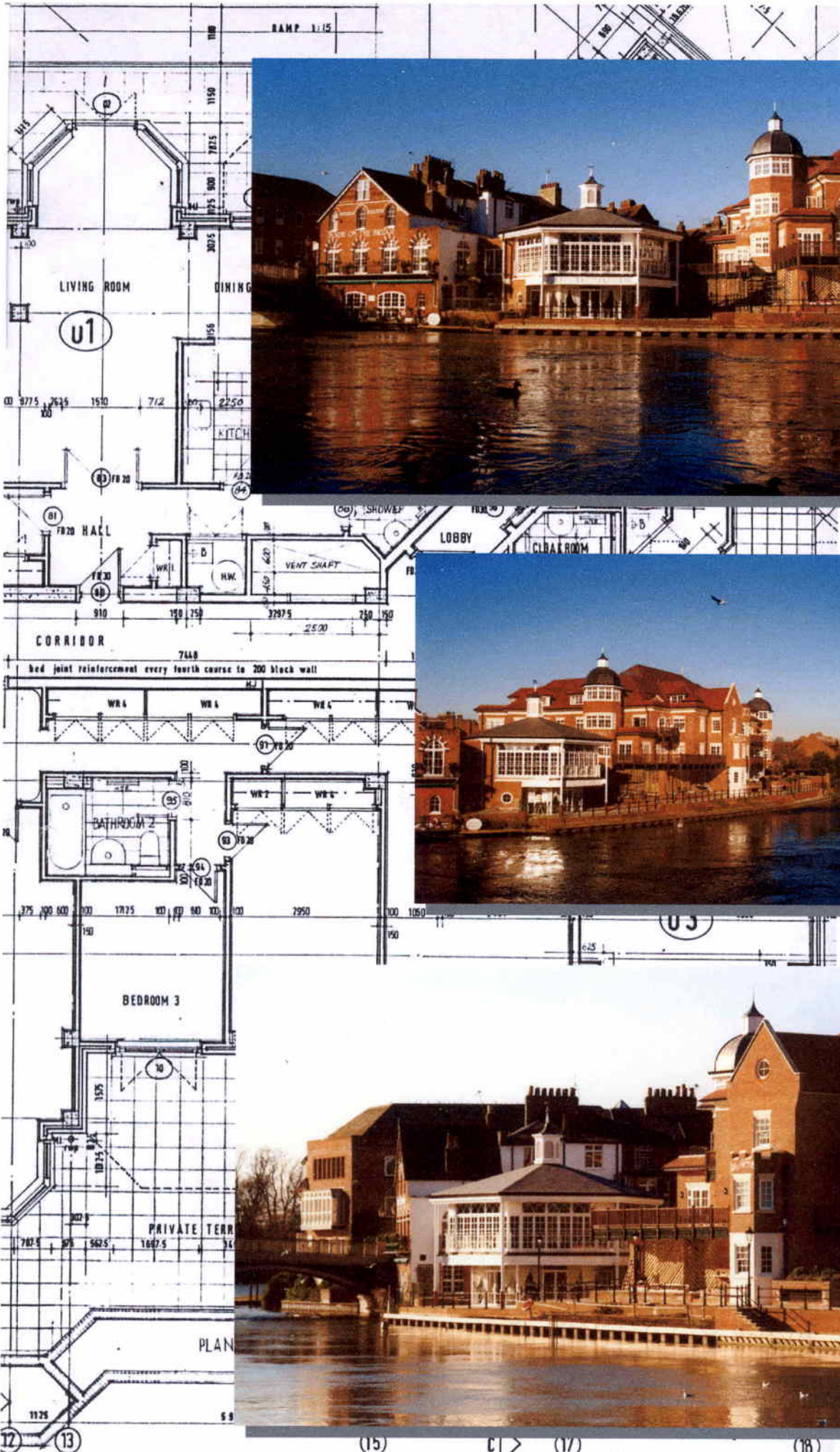


## KING STABLE STREET, ETON

- New residential and retail development for Rowns Moss (the commercial company of Eton College), incorporating 17 luxury new build apartments on the riverside at Eton and refurbishment of existing residential and retail premises on Eton High Street, some Grade 2 listed. Estimated construction cost, £8.5M

**1996 - 1999**





15

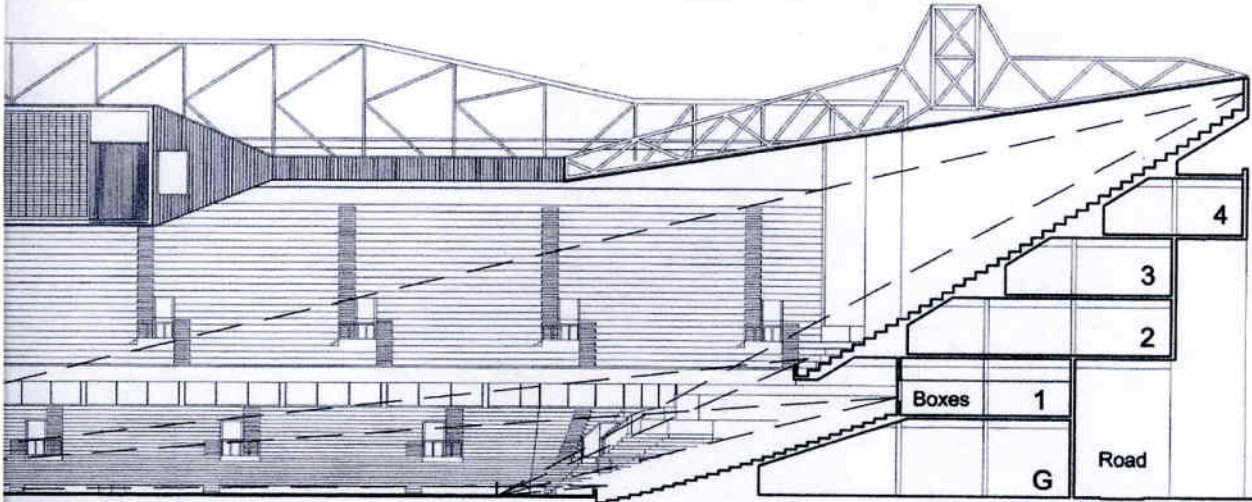
17

17

18

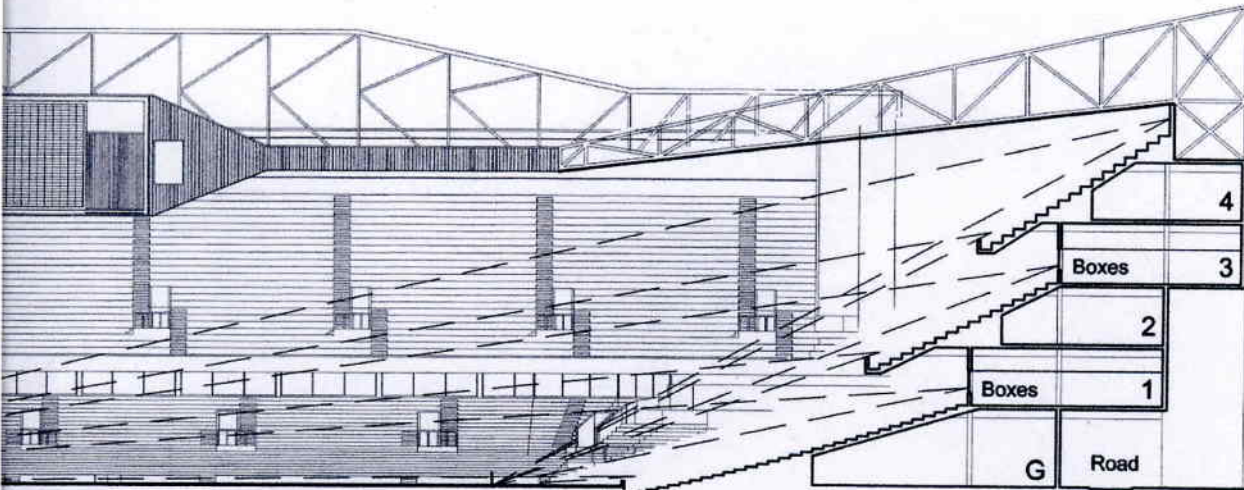
STADIUM DEVELOPMENT

TOTTENHAM HOTSPUR FOOTBALL CLUB



PROPOSED EAST STAND - TWO TIERS  
 MINIMUM SIGHTLINE VALUE = C90  
 APPROXIMATE CAPACITY OF STAND = 16,100

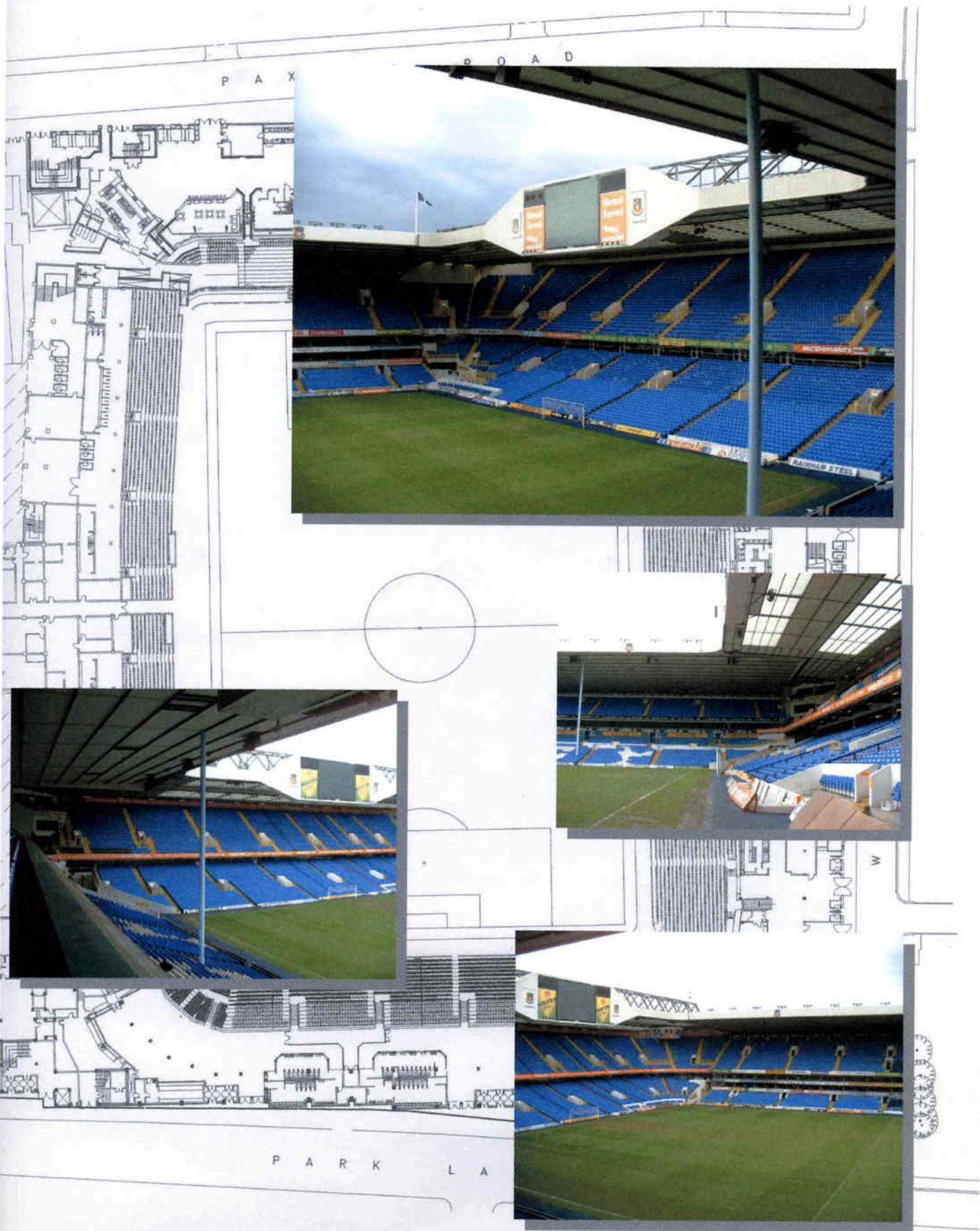
DEVELOPMENT - OPTION 1

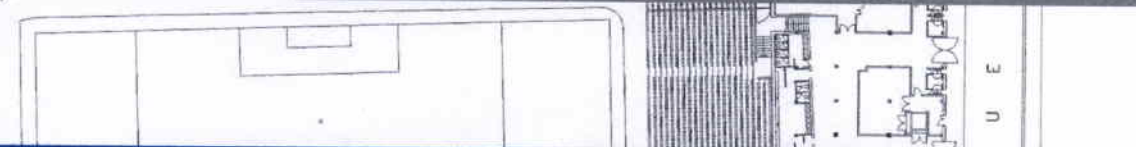
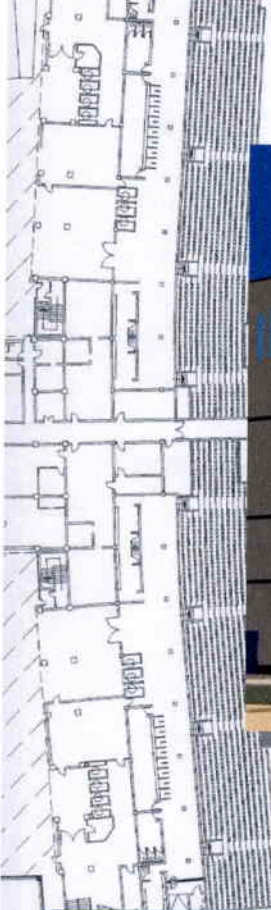
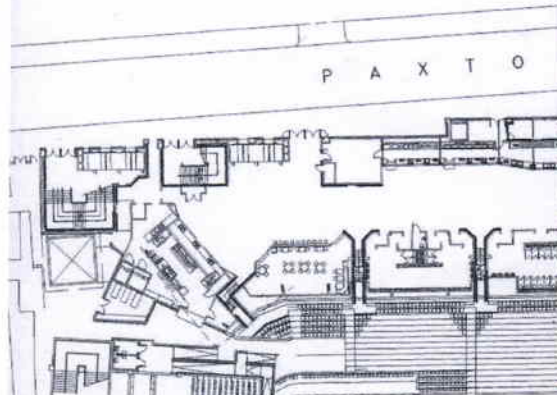


PROPOSED EAST STAND - THREE TIERS

- **New East Stand for Tottenham Hotspur Football Club**  
 Scheme design for a new stand to replace the existing East stand, for a capacity of over 16,000 spectators in three tiers with two levels of corporate boxes.
- **Phase Two redevelopment of the North Stand at Tottenham Hotspur Football Club**  
 New construction to provide accommodation for 10,200 spectators in a two-tier stand with concourses, catering outlets, lounges and boxes.
- **Redevelopment of South Stand for Tottenham Hotspur Football Club**  
 New construction to provide accommodation for 8,500 spectators in a two tier arrangement with concourses, catering outlets and offices
- **Phase one redevelopment of North Stand at Tottenham Hotspur Football Club**  
 Conversion of standing terracing to seating and new goal post roof

# TOTTENHAM HOTSPUR FOOTBALL CLUB





TOTTENHAM HOTSPUR FOOTBALL CLUB  
NEW EAST STAND

## NEW OFFICE DEVELOPMENT

12 ARTHUR STREET LONDON EC4



- Speculative office development in the City of London  
Demolition of existing 1950's office building and development of new eleven storey building with single basement on island site. High quality facades including quality glazing systems and Portland stone cladding in combination of precast and hand set applications.  
Estimated construction cost £28.0M

2001 - 2002