



July 2009

Customer Name Dealer Address	Account No
Tel No Delivery address	Order No
	Order Qty
	Order Date

Invacare® Action³ Junior - S

Dealer
Max User Weight 80 Kg (12½ Stone)

Standard Features
Choice Of 5 Frame Colours Select From 4 Widths And 3 Seat Depths 7° Sling Back Style
Removable Desk Armrests Solid Or Pneumatic Rear Tyres Fixed Or Folding Back Push To Lock Brakes Fire Retardant Lap Belt Standard Base Price £462

Please make your selection with a cross in the box ◆ Standard feature ○ Free of Charge
 NC = Incompatibility with option XXX99

Customer weight =		Kg		Dealer
Code	<input checked="" type="checkbox"/>	Description (NB: All Sizes Are Approximate)		
CNC0001	<input checked="" type="checkbox"/>	Action ³ Junior Evolutive (NC:0340)		£462
CNCSPEC		Special		TBC
0025	<input checked="" type="checkbox"/>	Action3 Junior		
PROPULSION TYPE				
0100		Self Propulsion (NC :1170)		○
0110		Transit Propulsion (NC: 0270,0280,1180,1190,1195,1201,1390) (Complete with integrated tipping aids)		○
SEATING TYPE				
SEAT WIDTH				
0140		20.5 cm (Only available with 90° Legrests and footboard)		○
0141		23cm (Only available with 90° Legrests footboard)		○
0142		25.5cm		◆
0143		28cm		○
SEAT DEPTH				
0160		Adjustable Seat Depth 20cm To 25cm (Delivered at 23cm) (NC:1060,1070,1075,1190,1195)		○
0161		Adjustable Seat Depth 25cm To 30cm (Delivered at 28cm)		○
0162		Adjustable Seat Depth 30cm To 35cm (Delivered at 33cm)		○
SEAT HEIGHT				
0260		46 cm		○
0270		43.5 cm		○
0280		41 cm (NC : 1280,1375,1430,1440)		◆
SEAT UPHOLSTERY TYPE				
0335		Nylon With Velcro Strips (Width and Depth Adjustable)		◆
BACKREST TYPE				
0370		Fixed 0° (3 Heights) 37/40/43cm (Set at 40cm)		○
0380		Fixed 7° Backrest (3 Heights) 37/40/43cm (Set at 40cm)		○
0390		Reclining Ratchet Backrest 0°/30° 5 Heights 35/37/39/41/43 (Set at 39cm) (NC : 1190,1195)		£90
0395		Gas Sprung Recliner Back 0/30° 40cm height (NC : 1190,1195)		£135
0400		Folding Backrest (3 Heights) 37/40/43cm set at 40cm (NC:0480)		◆
0420		Folding Backrest 40cm height with height adjustable push handles adjustable by 10 cm		£55
0425		Fixed 7° Backrest 40 cm height with height adjustable push handles adjustable by 15 cm		£55

Order No :

Customer Ref :

BACKREST UPHOLSTERY TYPE			
0475		Width & Height Adjustable Nylon Sling	◆
HANGERS/FOOTPLATES			
HANGERS RH TYPE			
0505		90° Straight Right Hand Removable Hanger UL 12.5cm To 26cm (NC:0565:1005)	£20
0510		80° Short Right Hand Swing In/Swing Out Hanger 0° Standard Position UL 22cm To 32cm (NC: 0562,0563,0565, 0610) (Hanger available in black only)	○
0512		80° Long Right Hand Swing In/Swing Out Hanger 0° Standard Position UL 30cm To 45cm (NC: 0561,0563,0565, 0610)	○
0515		Outrigged Frame 30° Abduction UL 8.5cm cm To 20.5cm (+ 20cm with extension tube) (NC : 0555,0560,0561,0562,0563,0570,0600,0610,0611,0880,0886,0890,0900)	○
HANGERS LH TYPE			
0555		90° Straight Left Hand Removable Hanger UL 12.5cm To 26cm (NC:1005)	£20
0560		80° Short Left Hand Swing In/Swing Out Hanger 0° Standard Position UL 22cm To 32cm (Hanger available in black only)	○
0562		80° Long Left Hand In/Swing Out Hanger 0° Standard Position UL 30cm To 45cm	○
0565		Outrigged Frame 30° Abduction UL 8.5cm cm To 20.5cm (+ 20cm with extension tube) (NC :0611,0880,0886)	○
FOOTPLATE TYPE R/H			
0605		Flip Up Depth And Angle Adjustable (Adapt) (Only available for seat widths 25.5cm & 28cm)	◆
0611		One Piece Footboard (NC0625:0870)	○
FOOTPLATE TYPE L/H			
0625		Flip Up Depth And Angle Adjustable (Adapt) (Only available for seat widths 25.5cm & 28cm)	◆
ARMRESTS			
ARMREST RH TYPE			
0640		Removable Desk Arm Adjustable RH 18 to 28 cm (NC: 0750,0745)	◆
0645		Removable Desk Arm RH (Junior) Adjustable 15 to 25 cm (NC: 0750,0755) Face Skirtgu	○
0650		Mudguard RH (NC: 0740,0745,0755,1471,1472)	○
0655		Skirtguard RH (Junior) (NC: 0740,0745,1471,1472) Face Skirtguard	○
ARMREST LH TYPE			
0740		Removable Desk Arm Adjustable LH 18 to 28 cm	◆
0745		Removable Desk Arm LH (Junior) Adjustable 15 to 25 cm Face Skirtguard	○
0750		Mudguard LH (NC:1471,1472)	○
0755		Skirtguard LH (Junior) (NC: 1471,1472) Face Skirtguard	○
SEATING OPTIONS TYPE			
0825		Customised Sticker Sheet	£22
0851		MSS Cushion (Essential Junior)	£82
0860		Multi Adjustable Headrest (NC:1425)	£80
0865		Round Headrest Multi Adjustable (NC:1425)	£112
0870		Adjustable Heel Strap	◆
0880		Adjustable Calf Straps	£8
0881		Outrigged castors +10cm	£30
0886		Footplate adjustment Kit, (front or rear set adjustment)	£15

Order No :

Customer Ref :

LPF0005N
Action3 SP
2 of 4

Subject to Invacare's standard Terms and Conditions.
Invacare reserve the right to alter product specification without prior notice.

COLOURS			
0950		Tangerine Orange	○
0960		Dark Red	○
0970		Sapphire Blue	○
0980		Anthracite Black	○
0990		Bubble Gum Pink	○
FRONT WHEELS			
1000		12.5cm x 2.5cm (5"x 1")	◆
1001		12.5cm x 2.5cm (5"x 1") Flashing Lights Solid Tyre	£22
1005		12.5cm x 4cm (5"x 1¾")	○
REAR WHEELS			
1060		56cm x 3.5cm (22" x 1.3/8") Pneumatic Tyre Spoke Rim	○
1070		56cm x 3.5cm (22" x 1.3/8") Solid Tyre Spoked Rim	○
1075		56cm x 3.5cm (22" x 1.3/8") Black Solid Tyre (NC : 1280)	○
1080		51cm x 3.5cm (20" x 1.3/8") Pneumatic Tyre (Spoked Rim) (NC:1280)	○
1090		51cm x 3.5cm (20" x 1.3/8") Solid Tyre (Spoked Rim) (NC:1280)	○
1100		30.5cm 5cm (12" x 2") Pneumatic Tyre (Plastic Rim) (NC : 1140, 1180, 1250, 1251, 1252, 1390,1391,1392)	○
1110		30.5cm 5cm (12" x 2") Solid Tyre (Plastic Rim) (NC : 1140, 1180, 1250, 1251, 1252, 1280, 1390,1391,1392)	○
HANDRIM TYPE			
1140		Aluminium Pre-anodized Handrim	◆
REAR WHEELS AXLE TYPE			
1170		Fixed Axle (NC : 1201)	◆
1180		Quick Release Axle	○
REAR WHEELS POSITION			
1190		Standard	◆
1195		Comfort Position	○
1200		Rear Wheel Position	○
1201		Dual Position Rear Wheel Set Back (NC : 1280)	£50
PUMP			
1230		Pump And Support	£7
CHASSIS OPTIONS TYPE			
1250		Spoke Guard Smiley	£40
1251		Spoke Guard Spider	£40
1252		Spoke Guard Flower	£40
BRAKES TYPE			
1270		Push To Lock Brakes	◆
1280		Attendant Hub Brakes Including Push To Lock Brakes	£110
SAFETY OPTIONS TYPE			
1350		Velcro Belt	○
1370		Rear Anti Tippers (PAIR) (NC: 1430, 1440)	£25
1380		Reflectors Kit (Wheels And Chassis)	£5
1390		Brake Extension (PAIR)	£10
1391		Brake Extension RH	£4.50
1392		Brake Extension LH	£4.50
ATTENDANT OPTIONS TYPE			
1425		Push Bar	£28
1430		Tipping Aid Right Hand	£10
1440		Tipping Aid Left Hand	£10
ACCESSORIES TYPE			
1471		Right Hand Swingaway Acrylic Tray	£145
1472		Left Hand Swingaway Acrylic Tray	£145
PRICE			
			Total Price

Order No :

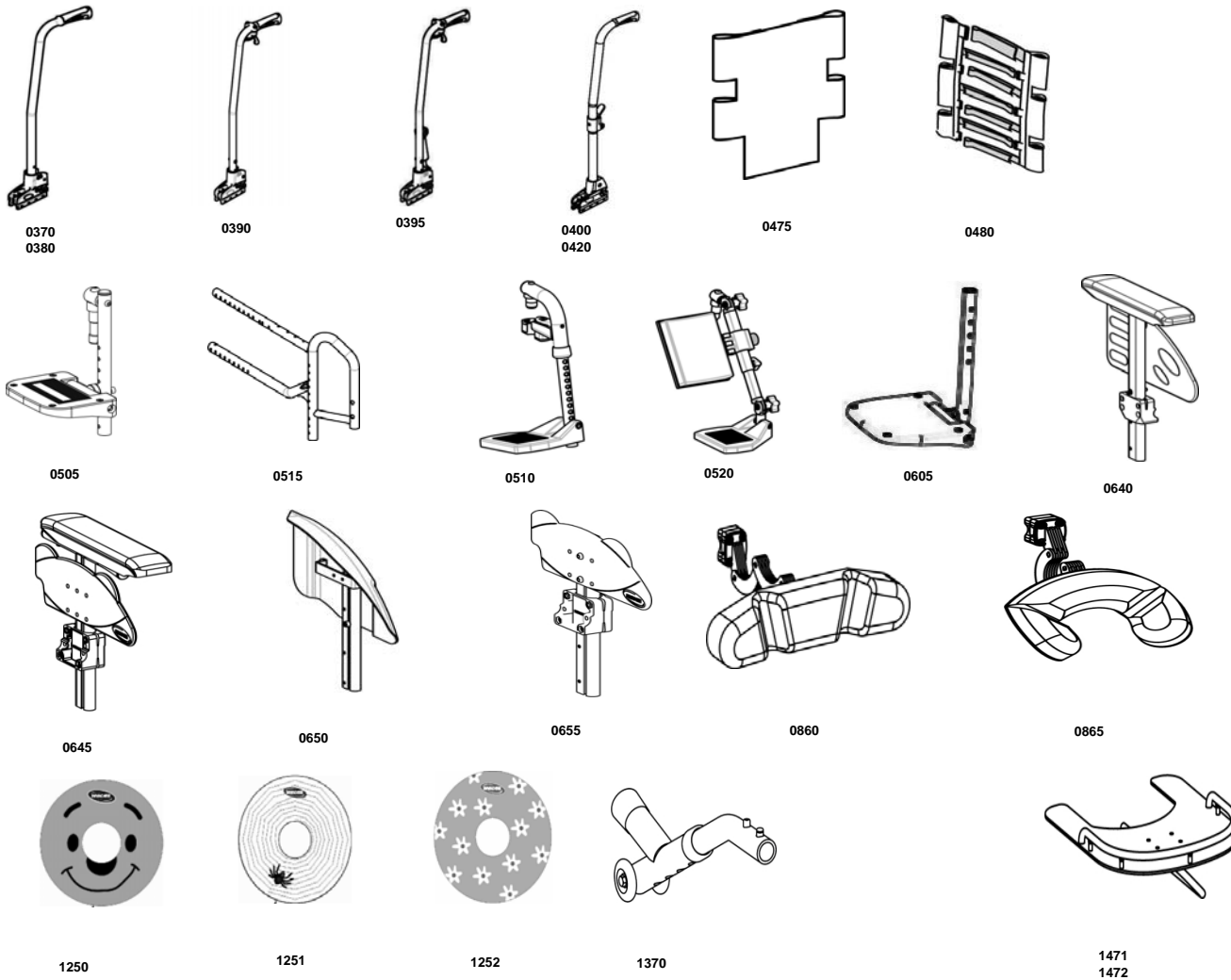
Customer Ref :

LPF0005N
Action3 SP
3 of 4

Subject to Invacare's standard Terms and Conditions.
Invacare reserve the right to alter product specification without prior notice.

Non Conforming Items Guide

0270	43.5 cm
0280	41 cm
0480	Tension adjustable nylon
0745	Removable Desk Arm LH (Junior) Adjusta
0750	Mudguard LH (NC:1471,1472)
0755	Skirtguard LH (Junior) (NC: 1471,1472)
0825	Customised Sticker Sheet
0880	Adjustable Calf Straps
0880	Footplate adjustment Kit, (front or rear set adjustment)
1060	56cm x 3.5cm (22" x 1.3/8") Pneumatic Tyre Spoke Rim
1070	56cm x 3.5cm (22" x 1.3/8") Solid Tyre Spoked Rim
1075	56cm x 3.5cm (22" x 1.3/8") Black Solid Tyre (NC : 1280)
1170	Fixed Axle
1180	Quick Release Axle
1190	Standard
1195	Comfrot Position
1250	Spoke Guard Smiley
1251	Spoke Guard Spider
1252	Spoke Guard Flower
1280	Attendant Hub Brakes Including Push To Lock Brakes
1390	Brake Extension (PAIR)
1425	Push Bar
1430	Tipping Aid Right Hand
1440	Tipping Aid Left Hand



Order No :

Customer Ref :