

NOTES:

- ALL DIMENSIONS IN MILLIMETRES UNLESS STATED OTHERWISE.
- ALL PRIVATE DRAINAGE WORKS ARE TO COMPLY WITH THE REQUIREMENTS OF BS 752 BUILDING DRAINAGE AND BUILDING REGULATIONS 2000 APPROVED DOCUMENT H 2002 EDITION. ALL ADOPTABLE DRAINAGE TO COMPLY WITH THE REQUIREMENTS OF SEVERN TRENT WATER AND SEWERS FOR ADOPTION (6th EDITION) INCLUDING THE RELEVANT PROVISIONS OF THE COMBINED ADDENDUM.
- ALL MATERIALS, UNLESS SPECIFIED OTHERWISE, SHALL COMPLY WITH THE RELEVANT BRITISH STANDARD. SOURCES OF MATERIALS ARE TO BE AGREED WITH THE EMPLOYER'S REPRESENTATIVE/ENGINEER IN ADVANCE OF THE WORKS.
- THIS DRAWING TO BE READ IN CONJUNCTION WITH ALL OTHER ENGINEERING DRAWINGS AND DETAILS AND CONTRACT DOCUMENTATION
- ANY DISCREPANCIES IN THE DETAILS SHOWN TO BE REPORTED TO THE EMPLOYER'S REPRESENTATIVE/ENGINEER PRIOR TO CONSTRUCTION.
- LOCATION AND LEVELS OF EXISTING DRAINAGE RUNS ARE BASED UPON SEWER RECORD PLANS AND MUST BE CHECKED ON SITE PRIOR TO THE COMMENCEMENT OF ANY DRAINAGE WORKS.
- ALL EXISTING SERVICES TO BE LOCATED PRIOR TO THE COMMENCEMENT OF ANY DRAINAGE WORKS WHERE NECESSARY PROTECTION OR DIVERSIONS TO BE UNDERTAKEN TO AVOID CONFLICT WITH THE PROPOSED WORKS.
- ALL ADOPTABLE DRAINAGE AND FITTINGS TO BE FLEXIBLY JOINTED CLAYWARE TO BS EN295 OR CONCRETE TO BS5911 PART 100. FLEXIBLY JOINTED UPVC PIPES AND FITTINGS TO WIS No 4-13-05 MAY BE USED FOR PRIVATE BUILDING DRAINAGE SYSTEMS ONLY.
- TYPICAL PIPE BEDDING TO DRAINAGE WHERE DEPTH TO SOFFIT IS GREATER THAN 600mm IN LANDSCAPED AREAS AND GREATER THAN 1200mm IN ADOPTABLE HIGHWAYS AND 900mm IN OTHER TRAFFICKED AREAS IS TO BE CLASS S (I.E. 10-14mm GRADED IMPORTED GRANULAR BED AND SURROUND FOR PIPES UP TO 1000mm DIA. (SEE DRAWING No WM02953003)
- WHERE DEPTH TO SOFFIT OF DRAINAGE PIPEWORK IS LESS THAN 600mm IN LANDSCAPED AREAS AND LESS THAN 1200mm IN ADOPTABLE HIGHWAYS AND 900mm IN OTHER TRAFFICKED AREAS THEN PIPEWORK IS TO BE PROTECTED WITH 175mm THICK C20P REINFORCED CONCRETE SLAB AS SHOWN ON DRAWING No WM02953003
- BACKFILL TO DRAINAGE TRENCHES UNDER CARRIAGEWAYS TO BE TYPE 1 SUB-BASE MATERIAL, ELSEWHERE BACKFILL TO BE FREE DRAINING READILY COMPATIBLE MATERIAL, FREE FROM RUBBISH AND ORGANIC MATTER, FROZEN SOIL CLAY LUMPS AND LARGE STONES. TO BE COMPACTED IN LAYERS NOT EXCEEDING 150mm THICK.
- CONCRETE MIXES INDICATED ON THIS DRAWING ARE DESIGNED MIXES CONFORMING TO BS 8500-1, 2002.
- MANHOLE DIAMETERS SHOULD BE IN ACCORDANCE WITH THE TABLE BELOW:

DIAMETER OF LARGEST PIPE IN MANHOLE (mm)	INTERNAL DIAMETER OF MANHOLE (mm)
LESS THAN 375	1200*
375-450	1350
500-700	1500
750-900	1800
950-1200	2100

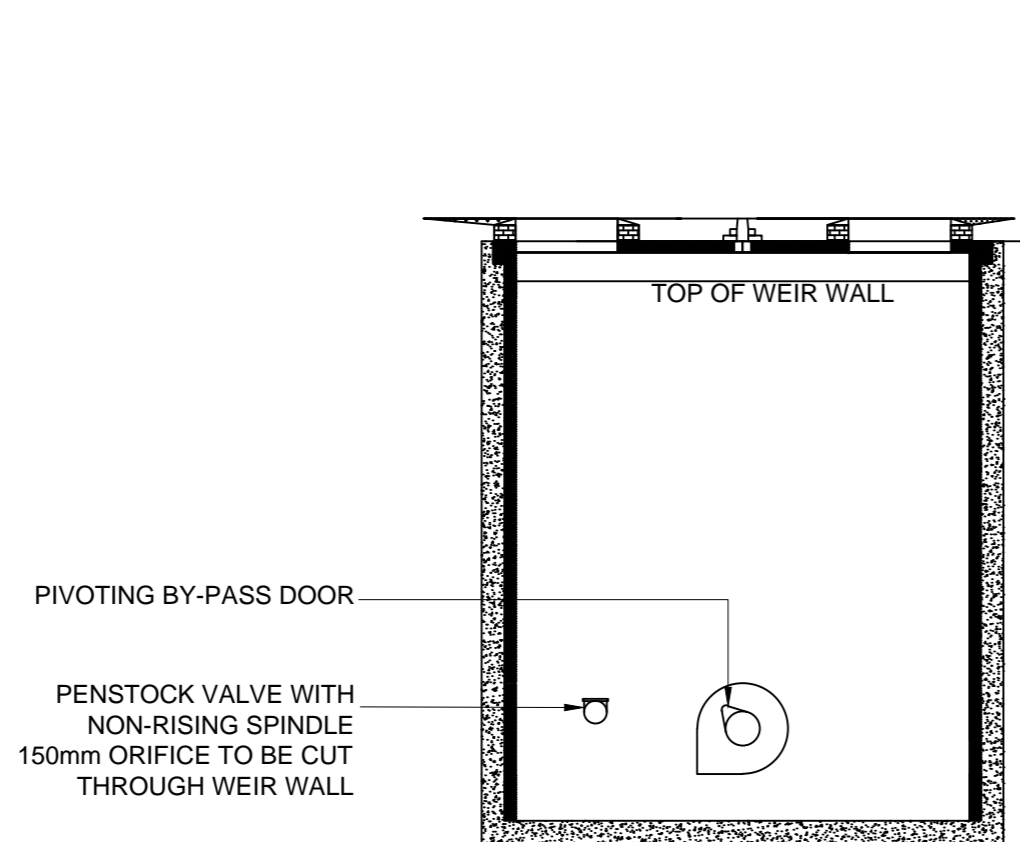
*1350 WHERE DEPTH TO SOFFIT IS 1350-1500mm

- A FLEXIBLE JOINT SHALL BE PROVIDED AS CLOSE AS IS FEASIBLE TO OUTSIDE FACE OF ANY STRUCTURE INTO WHICH A PIPE IS BUILT, COMPATIBLE WITH THE SATISFACTORY COMPLETION AND SUBSEQUENT MOVEMENT OF THE JOINT. THE LENGTH OF THE NEXT PIPE (ROCKER PIPE) AWAY FROM THE STRUCTURE SHALL BE AS SHOWN IN THE TABLE BELOW.

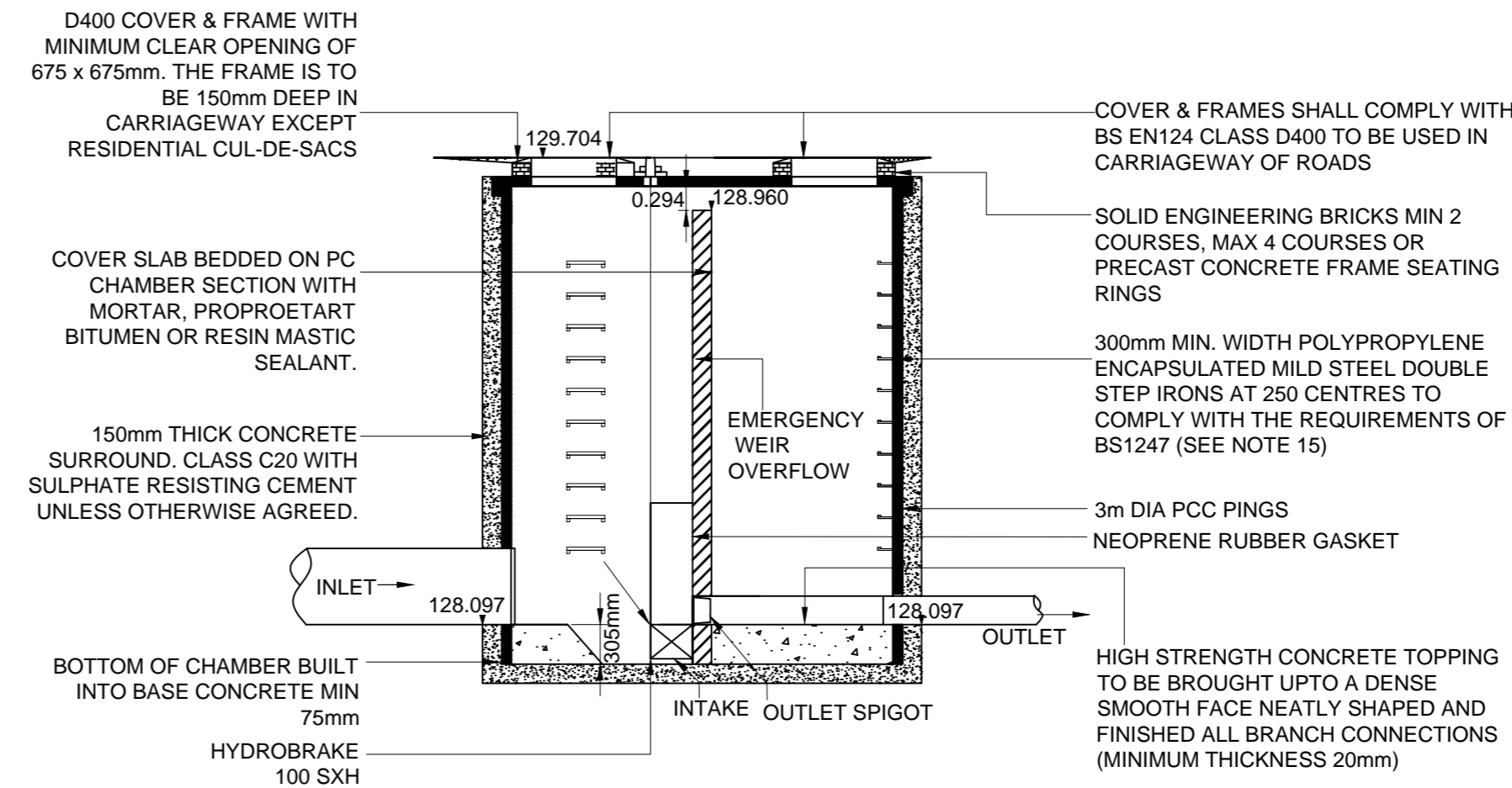
NOMINAL DIAMETER (mm)	EFFECTIVE LENGTH (m)
150-600	0.6
675-750	1.0
825 AND OVER	1.25

- ALL STEP IRONS TO BE STAINLESS STEEL (GRADE 316 S31 BS 5970) OR POLYPROPYLENE ENCAPSULATED TO BS 1247 PARTS 1-2, DOUBLE STEP RUNGS (280mm MIN WIDTH AT 250mm MAXIMUM CENTRES). MAXIMUM DISTANCE FROM COVER LEVEL TO FIRST STEP TO BE 675mm.
- ALL MANHOLE / INSPECTION CHAMBER COVERS TO BE CLEARLY MARKED 'SW' OR 'FW', AS APPROPRIATE, SO AS TO BE CLEARLY VISIBLE FROM THE SURFACE. MANHOLE COVERS TO BE 600x600 CLEAR OPENING FOR PIPES LESS THAN 875mm DIA. AND 675x675 CLEAR OPENING FOR PIPES 875mm DIA. OR GREATER. MIN 675 x 675 ACCESS TO CHAMBERS FITTED WITH A LADDER OR FLOW CONTROL DEVICE.

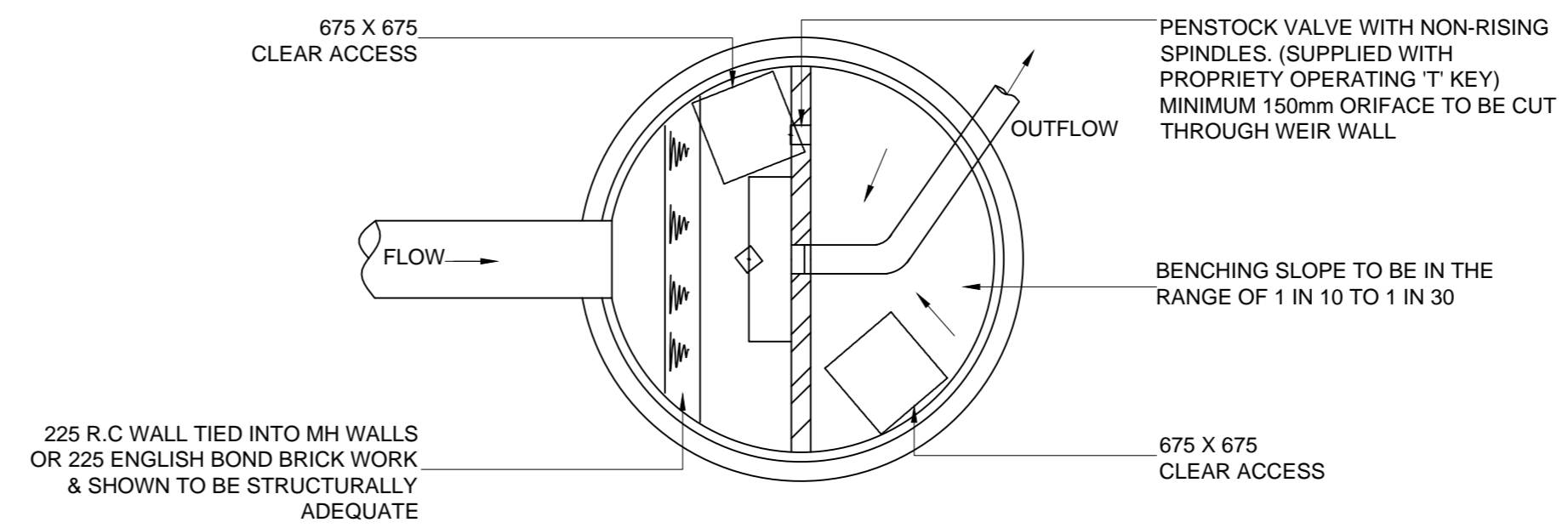
THIS DRAWING MAY BE USED ONLY FOR THE PURPOSE INTENDED AND ONLY WRITTEN DIMENSIONS SHALL BE USED



SECTION B - B



SECTION A - A



PLAN OF CONTROL CHAMBRE (S4)

Revision	Details	By	Check	Date	Suffix

Drawing Number	Revision
J01026/A2/007	

**BENTLEY ROAD
NORTH
WALSALL**

Drawing Title
**HYDRO-BRAKE
DETAILS**

Scale at A2	Detailed	Approved
1:50		James Mewis
Drawn	Tech Chk	Det Chk
RJS	JJM	
		Date
		22.10.07

www.jnmengineering.co.uk
84 Lloyds Head, Jackfield
Ironbridge, TF8 7LZ.
Tel: 01952 885767
info@jnmengineering.co.uk
Company Registration Number: 05782540