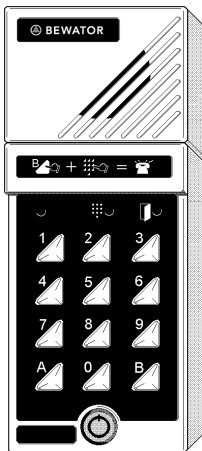


Bewacom

GB

Technical manual



 **BEWATOR**

Copyright © January 2001 Bewator AB, Solna, Sweden.

Material from the Bewacom Technical manual may only be copied with the consent in writing of Bewator. Bewator reserves the right to alter both the content of the manual and the design of the product without notice.

Document no: **80642-2**

Bewator AB are parts of Bewator Group, which develops and markets a complete security product range that includes, access control and alarm. Sales, installation and servicing are handled by a national dealer network.

Actions (such as unauthorised manipulation, copying etc.), must not be taken with the software contained in the products and systems. Such actions are regarded as copyright violation and may result in imprisonment or fines and may likewise lead to an obligation to pay damages and compensation for using the software.

Contents

WHAT IS BEWACOM?	5
How Bewacom works	5
Points to remember	6
Time control of the access codes.....	6
Monitoring camera.....	6
Limitations	7
Requirements for connecting	
Bewacom to a telephone system	7
INSTALLING BEWACOM.....	8
INSTALLATION	10
THE KEYPAD	12
PROGRAMMING	13
Internal sounder and LEDs	13
Setting a password.....	14
Setting Bewacom to programming	
mode.....	14
Programming access codes (first	
time).....	15
Changing entrance codes	16
Erasing access codes.....	17
Changing the door unlock time	18
Extending the opening time 10 times	18
Changing the calling time	19

Extending the calling time 10 times	19
Time control of the telephone	
opening function	20
Background lighting.....	21
Internal sounder	22
Possibility to call the Bewacom	23
"Hotline"	24
Erasing the memory	25
PROGRAMMING OVERVIEW	26
THIS IS HOW THE NEW DOOR	
TELEPHONE WORKS.....	28
CALLING BEWACOM	29
TROUBLESHOOTING	30
TECHNICAL DATA.....	32
NOTES.....	33

What is Bewacom?

Bewacom is a door telephone which can be directly connected, like an extension, to an internal telephone system (PABX).

Using the Bewacom, visitors may call any telephone connected to the telephone system. The person answering the telephone can talk to the visitor and open the door from the extension telephone.

Bewacom includes a built-in codelock to allow access for staff.

How Bewacom works

To make a call from the Bewacom, the visitor presses B + the desired extension on the keypad. Available extensions should be displayed on a name plate next to the door.

At the other end, the telephone rings as usual. It is possible to speak with the visitor for 30 seconds (extendable).

To open the door, the person called presses 5 on the telephone keypad and hangs up. To not open, press 0 and hang up.

Points to remember

Bewacom only allows communication in one direction at a time. Each person must speak in turn for satisfactory communication.

Time control of the access codes

The access codes can be time controlled from external time clock(s) connected to the Bewacom. For example, the cleaning staff code could only be valid certain times, while other codes should operate 24 hours a day.

By connecting two time clocks, three time zones can be used: one controlled by time clock 1, one by time clock 2 and one that is valid 24 hours a day, i.e. no time control.

The access codes can be programmed to the required time control group.

Monitoring camera

If desired, a CCTV camera can be controlled from an output of the Bewacom. The camera will be automatically activated when the visitor presses the B button and remain active during the calling time plus the door open time.

Limitations

Bewacom cannot normally call extensions beginning with 0 or extensions consisting of more than 4 digits. If the installation requires alterations in these limits, contact Bewator.

Requirements for connecting Bewacom to a telephone system

An analogue extension (two wires) must be used for the connection of Bewacom. The telephones to be called by Bewacom must be able to send a standard tone signal to Bewacom for the door release function to work.

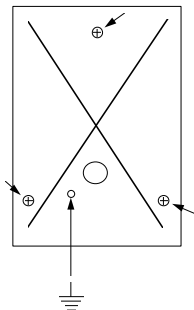
How to test whether the telephone system meets the requirements or not:

- 1 Connect an ordinary push button telephone to the Bewacom extension, and dial any of the other extensions on the telephone system.
- 2 Ask the person answering at the other end to press the 5 key on the telephone keypad. If a tone is heard, Bewacom should work correctly.

Installing Bewacom

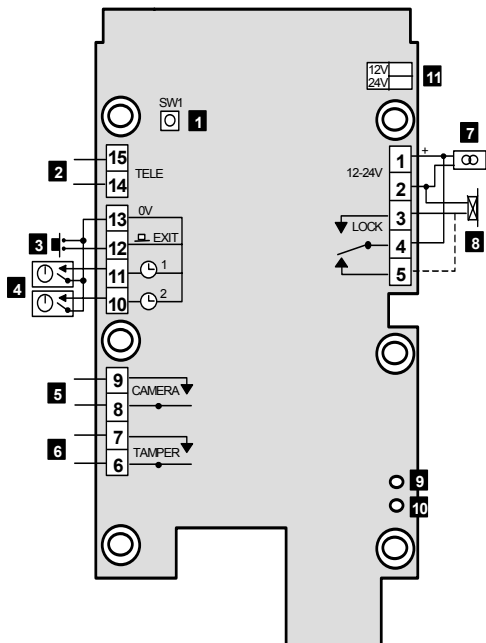
Install the Bewacom at a height of 120–140 cm (from the floor to the bottom edge of the Bewacom). To cater for disabled persons, a suitable height is approximately 95 cm.

- 1 Open the Bewacom with the key supplied. The lock is located on the front.
- 2 Fasten the back plate against the wall, using three screws as shown in the illustration below. Seal the screw and cable holes with sealant if the unit is externally mounted.



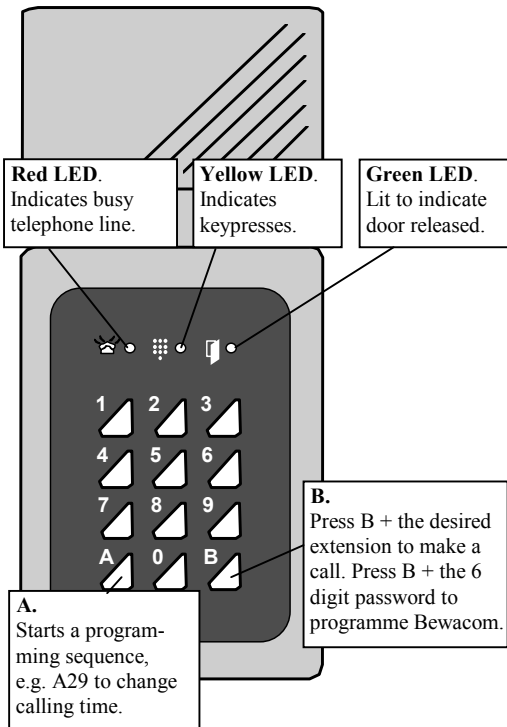
- 3 Unless the unit is already mounted on a metallic earthed surface, earth the back plate. Use a separate cable to the earthing point. Make sure the front and back plate are connected with the internal strap.
- 4 Fit the front and check that the Bewacom is securely fastened.

Installation



- 1** SW1 push button. Used to set the password and erase the memory.
- 2** Connection to the telephone system.
- 3** Exit button. Connect terminal nos 12 and 13. Looped = door open.
- 4** Time control from the external time clock. Input 1: Connect terminal nos 11 and 13. Input 2: Connect terminal nos 10 and 13. Looped input = the codes are disabled.
- 5** Camera relay output.
- 6** Tamper switch. Normally closed when the housing is closed.
- 7** Power supply in, terminal nos 1 and 2.
- 8** Electric locking device. Dashed line refers to locks with failsafe function.
- 9** Speaker volume.
- 10** Microphone sensitivity.
- 11** Jumper for 12 or 24 V voltage supply. If above 20 V, set the jumper to 24 V.

The keypad



Programming

The sections below describe how to programme Bewacom.

Internal sounder and LEDs

During programming, guidance will be given by the internal sounder and the LEDs.

In the manual the LED indications are shown as follows:

○ = Off ● = Lit * = Flashes

In programming mode before a function is chosen: Red and yellow LED flashes.

During programming: The LEDs are lit or off depending on the function being programmed.

Correct programming: Confirmed by a rising signal – two quick beeps.

Faulty programming: Confirmed by a falling signal – two quick beeps.

Note! Once programming mode has been entered, if a key is not pressed within 15 seconds, the unit will return to normal operation.

Setting a password

The first thing to do is to set a password. You will later use the password each time you want to programme the Bewacom.

- 1 Open the Bewacom and turn it around so the circuit board can be seen.
- 2 Press the SW1 button (see the wiring diagram on page 10). ●●
- 3 Enter the desired 6-digit password. ○○
- 4 Make a note of the password and store the note in a safe place.

Setting Bewacom to programming mode

To programme a function, set Bewacom to programming mode.

- 1 Press and hold the B button on the Bewacom keypad until the beeper goes off and the yellow LED goes out (approx 3 seconds).
- 2 Enter the 6-digit password. ●●

Programming access codes (first time)

Four different 4-digit entrance codes can be programmed.

- 1 Set Bewacom to programming mode.
- 2 Press 0000.
- 3 Enter the desired access code using 4 digits.
- 4 Enter the code once again.
- 5 If the code is not to be time controlled, press **0**.

If the code is to be time controlled, select the desired input (see below).

1 = the code can be timed from a time clock connected to input 1.

2 = the code can be timed from a time clock connected to input 2.

Also see the wiring diagram on page 10.

- 6 Follow steps 2-5 to programme the next code.
- 7 Press B to exit programming.

Changing entrance codes

- 1 Set Bewacom to programming mode.
- 2 Enter the access code to change.
- 3 Enter the new access code.
- 4 Enter the new access code again.
- 5 To only change the code – without changing the time control group – press B now.

If the code is not timed, press **0**.

If the is timed, select the desired input (see below).

1 = the code can be timed from a time clock connected to input 1.

2 = the code can be timed from a time clock connected to input 2.

Also see the wiring diagram on page 10.

- 6 Follow steps 2-5 to change the next code.
- 7 Press B to exit programming.

Erasing access codes

To erase a programmed access code:

- 1 Set Bewacom to programming mode.
- 2 Enter the access code to erase.
- 3 Enter 0000.
- 4 Enter 0000 again.
- 5 Press B.
- 6 Press B to exit programming.

Changing the door unlock time

When Bewacom is delivered the door unlock time is set to 7 seconds.

- 1 Set Bewacom to programming mode.
- 2 Press A28.
- 3 Select the required unlock time in seconds (01-99).
- 4 Press B to exit programming.

Extending the opening time 10 times

Using this function the door unlock time can be increased by a factor of ten.

- 1 Set Bewacom to programming mode.
- 2 Press A64.
- 3 Press 1 to extend opening time 10 times.
- 4 Press B to leave programming mode.

To deactivate the function, press 0 in step 3 instead.

Changing the calling time

When Bewacom is delivered the calling time is set to 30 seconds.

- 1 Set Bewacom to programming mode.
- 2 Press A29.
- 3 Select the desired calling time in seconds (01-99).
- 4 Press B to exit programming.

Extending the calling time 10 times

Using this function the calling time can be increased by a factor of ten.

- 1 Set Bewacom to programming mode.
- 2 Press A61.
- 3 Press 1 to extend the calling time 10 times.
- 4 Press B to leave programming mode.

To deactivate the function, press 0 in step 3 instead.

Time control of the telephone opening function

This will set the time period during which it will be possible to open the door from a telephone extension.

- 1 Set Bewacom to programming mode.
- 2 Press A30.
- 3 Select any of the following alternatives:
 - 0** = Opening enabled 24 hours a day (delivery setting).
 - 1** = Opening controlled by time clock connected to input 1.
 - 2** = Opening controlled by time clock connected to input 2.
 - 3** = The door cannot be opened from telephone extensions.
- 4 Press B to exit programming.

Background lighting

This function allows you to turn off the keypad background lighting of the Bewacom. The default setting is on.

- 1 Set Bewacom to programming mode.
- 2 Press A60.
- 3 Press 0 to shut off background lighting.
- 4 Press B to leave programming mode.

To turn it on again, press 1 in step 3 instead.

Internal sounder

When Bewacom is delivered the internal sounder is on. If the sounder is not required to sound on keypresses and door release, you can turn it off. Note that the sounder will still be sounding during programming.

- 1 Set Bewacom to programming mode.
- 2 Press A65.
- 3 Press 0 to shut off the sounder.
- 4 Press B to leave programming mode.

To reactivate the sounder, press 1 in step 3 instead.

Possibility to call the Bewacom

Using this function, the Bewacom can be called from the switchboard or from an extension to assist a visitor having trouble using the door telephone.

To enable the function:

- 1 Set Bewacom to programming mode.
- 2 Press A66.
- 3 Select and programme the desired 4-digit code. The code is keyed in at the telephone to open the door.
- 4 Enter the code one more time.
- 5 Press B to leave programming mode.

To deactivate the function, follow the above instruction, only press 0000 instead in steps 3 and 4.

On page 29 you will find instructions on how to call the Bewacom.

”Hotline”

By using the facilities of the telephone system, this function can be used to call a particular extension from a single push of the B button on the Bewacom. When this function is set, the Bewacom will seize the line immediately the B button is pressed. No other number is permitted at this point (the keyboard is disabled). The telephone system is then programmed to respond to this ”hotline” condition.

To enable this function.

- 1 Set Bewacom to programming mode.
- 2 Press A67.
- 3 Press 1 to enable hotline.
- 4 Press B to leave programming mode.

To deactivate the function, press 0 in step 3 instead.

Erasing the memory

Using this function all programmed information in the Bewacom can be erased and the unit set back to factory defaults.

- 1 Set Bewacom to programming mode.
- 2 Open the Bewacom and turn it around so the circuit board can be seen.
- 3 Press the SW1 button (see the wiring diagram on page 10).
- 4 Press 112186 on Bewacom's keypad.
- 5 Press 112186 again.

Bewacom now has the default settings:

Password:	112233
Opening time:	7 secs
Calling time:	30 secs
Door release from telephone:	0
Background lighting:	On
Internal sounder:	On
Possibility to call into Bewacom:	Off
Hotline	Off
Extended opening time	Off
Extended calling time	Off

Programming overview

Function	Step 1	Step 2	Step 3	Step 4	Step 5
Programme access codes	Set Bewacom to programming mode	Enter 0000	Enter code (4 digits)	Enter code once again	Enter time control group (0, 1 or 2)
Change access codes	Set Bewacom to programming mode	Enter code to change	Enter new code (4 digits)	Enter code once again	Enter time control group (0, 1 or 2)
Erase access codes	Set Bewacom to programming mode	Enter code to erase	Enter 0000	Enter 0000 once again	
Change opening time	Set Bewacom to programming mode	Press A28	Enter opening time (2 digits)		
Change calling time	Set Bewacom to programming mode	Press A29	Enter calling time (2 digits)		
Time control of the telephone opening function	Set Bewacom to programming mode	Press A30	0 = no time control 1 = input 1 2 = input 2 3 = opening disabled		

Function	Step 1	Step 2	Step 3	Step 4	Step 5
Background lighting	Set Bewacom to programming mode	Press A60	0 = off 1 = on		
Internal sounder	Set Bewacom to programming mode	Press A65	0 = off 1 = on		
Door unlock time extended by a factor of 10	Set Bewacom to programming mode	Press A64	0 = off 1 = on		
Calling time extended by a factor of 10	Set Bewacom to programming mode	Press A61	0 = off 1 = on		
Erase memory	Set Bewacom to programming mode	Open Bewacom	Press SW1 on the circuit board	Enter 112186 on the keypad	Enter 112186 once again
Possibility to call into Bewacom	Set Bewacom to programming mode	Press A66	0 = off 1 = on		
Hotline	Set Bewacom to programming mode	Press A67	0 = off 1 = on		

This is how the new door telephone works

We have recently installed a door telephone which will be in use from _____.

If access codes are used you may enter a 4-digit code to open the door. The code is _____.

The code is valid:

Monday – Friday between _____ and _____

When your visitor arrives they should press B on the door telephone keypad and then enter the reception number or your extension number.

You may talk to the visitor for _____ seconds.

To open the door, press 5 on your telephone's keypad and hang up.

To not open the door, press 0 and hang up.

Calling Bewacom

This is how to call the door telephone, e.g. if you want to assist a visitor trying to get in.

- 1 Dial the door telephone extension number. The line is connected so you can talk to the visitor.
- 2 To release the door enter a valid 4-digit access code (see page 23)
- 3 To finish the call without releasing the door, press # on your telephone.

Troubleshooting

Problem	Possible cause	Action
Nothing happens when a code is entered.	The code is timed.	Check connected time clock.
Unable to enter programming mode. Red LED lit after two trials.	Wrong password.	Determine the correct password.
Green LED lit following an accepted code, but the door does not open.	Lock fault. Link between block nos 1 and 4 in Bewacom is missing.	Check cable between door telephone and lock. Change locks. Attach link.
The B button is pressed, but no dial tone is heard.	Faulty connection between Bewacom and telephone system. The door telephone extension is not analogue.	Check connections and cable. Check the telephone system. Connect an ordinary push-button telephone instead of Bewacom.

Problem	Possible cause	Action
The B button is pressed, a line tone is heard, the extension is dialled but it does not ring.	<p>The telephone system does not receive DTMF tones from Bewacom.</p> <p>The extension has more than four digits.</p> <p>The extension begins with 0 (zero).</p>	<p>Check the telephone system.</p> <p>Try to connect an ordinary push-button telephone instead of Bewacom.</p> <p>Contact Bewator.</p> <p>Contact Bewator.</p>
The call is received, but the lock does not react to the 5 key DTMF tone. No tone is heard in Bewacom.	The telephone system does not send DTMF tones to Bewacom.	Check the telephone system.

Technical data

Power supply:	12-24 V AC/DC
Power consumption:	60 mA quiescent
Maximum load over the relay contacts:	2 A 28 V DC
Door unlock time:	1-99 seconds (extendable by a factor of ten)
Calling time:	1-99 seconds (extendable by a factor of ten)
Temperature range:	-35° to +50° at 90 % relative humidity
Dimensions:	200 x 80 x 40 mm (HxWxD)
Recommended height:	1200-1400 mm from ground to bottom edge

 **BEWATOR**